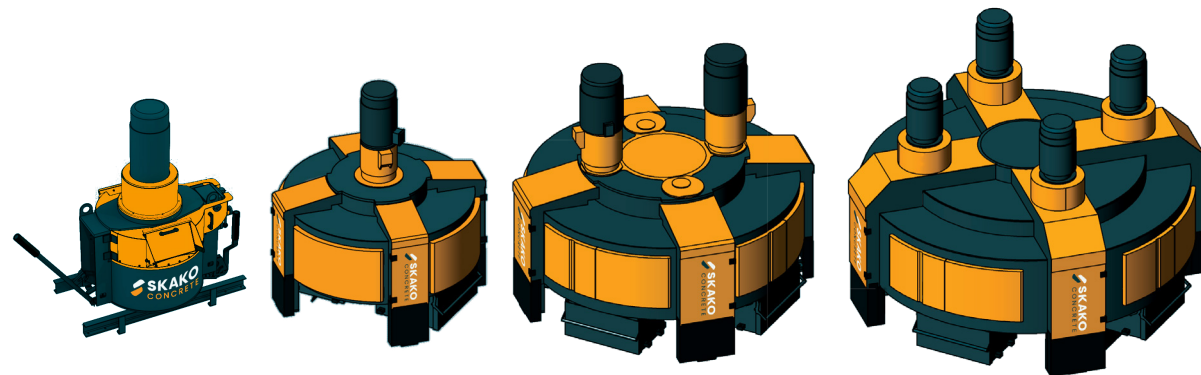


## Specifications

- Less manpower needed during lifetime
- Up to 50% shorter cleaning time
- Up to 23% faster discharging
- Shorter cycle times
- Up to 19% savings on energy consumption
- Lower operating and maintenance costs
- Side-mounted hatches for safe, easy access
- Fast replacement of wear parts
- Excellent visibility
- Self-lubricating gear in oil sump

| Type                                 | 125     | 750      | 1125      | 1500      | 2250      | 3000      | 3750      | 4500      | 6000      |
|--------------------------------------|---------|----------|-----------|-----------|-----------|-----------|-----------|-----------|-----------|
| Volume l/kg                          | 125/200 | 750/1200 | 1125/1800 | 1500/2400 | 2250/3600 | 3000/4800 | 3750/6000 | 4500/7200 | 6000/9600 |
| Max. output per batch m <sup>3</sup> | 0.08    | 0.5      | 0.75      | 1.0       | 1.5       | 2.0       | 2.5       | 3.0       | 4.0       |
| Motor size kW                        | 3       | 18,5     | 30        | 2x22      | 2x30      | 2x37      | 3x30      | 4x30      | 4x37      |
| Mixer stars                          | 1       | 1        | 1         | 2         | 2         | 2         | 3         | 3         | 4         |



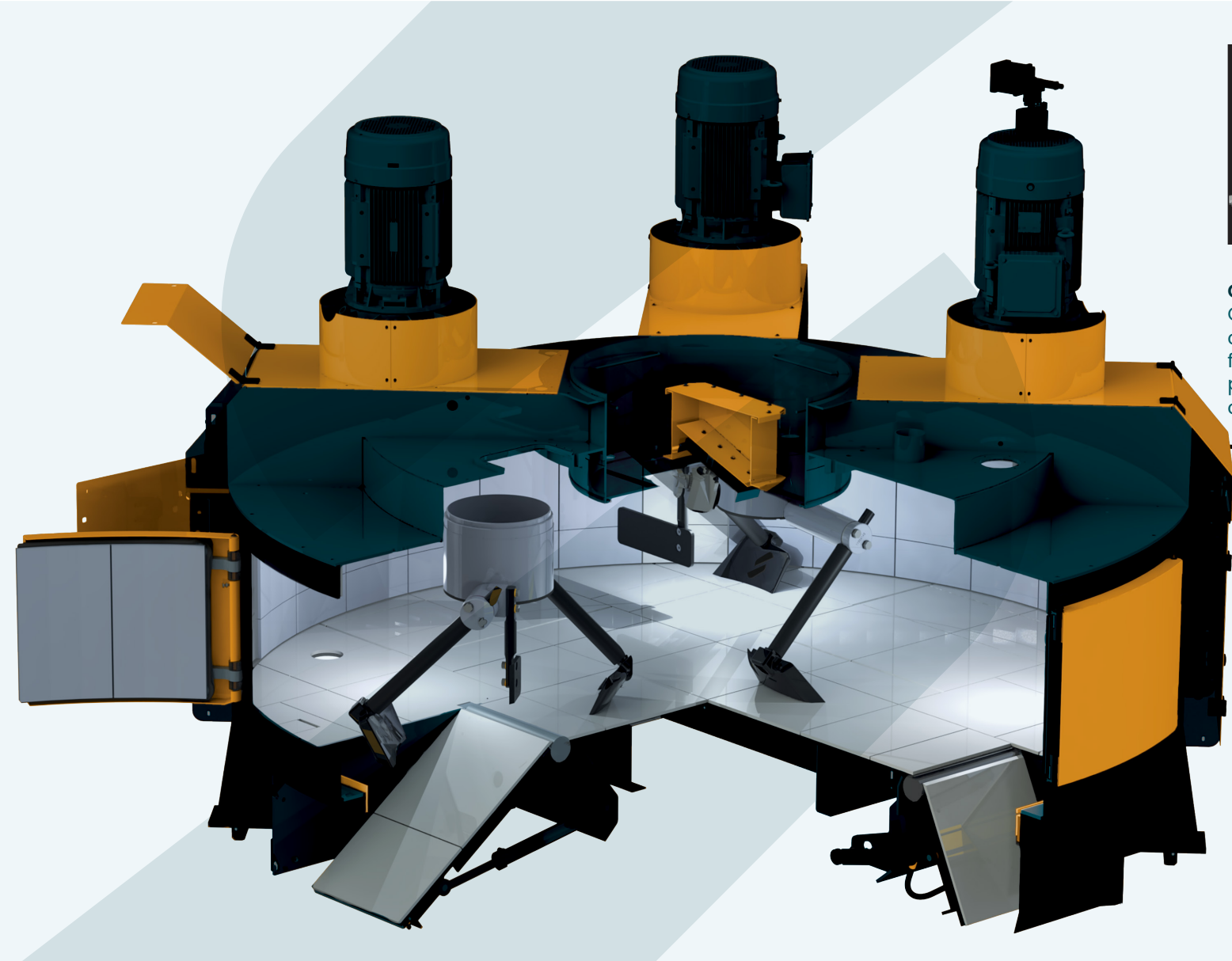
[www.skakoconcrete.com](http://www.skakoconcrete.com)

# Atlantis Mixer



# What makes ATLANTIS so much better?

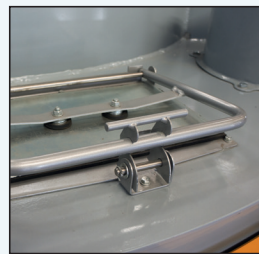
The SKAKO Concrete Atlantis concrete mixer is a high-performance planetary mixer, and the result of over 90 years of mixer evolution. Atlantis is designed to optimize mixing, cleaning, discharging, energy consumption, maintenance and safety in everyday use.



**Airbag**  
Anti-dust airbag system prevents the dust from entering the work environment.



**Inspection hatch**  
Inspection hatch on top of the mixer makes it possible to look into the mixer during the mixing process, without compromising safety. Optional with LED light.



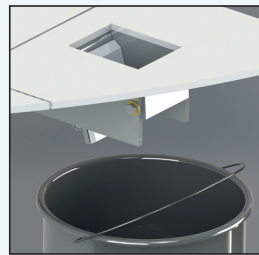
**Inlet / skip hoist**  
Safe and dustproof inlet for skip hoist bucket. Inlet is closed when bucket is not in position. Large opening for fast discharge of materials into the mixer.



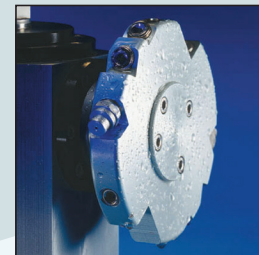
**Water proportioning**  
Water proportioning device enables the addition of water during production. Different models available for different types of concrete.



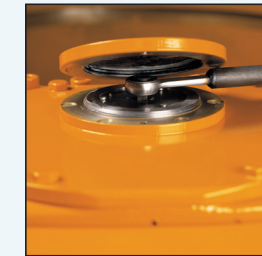
**Sampler**  
Semi-automatic, electro-hydraulic device for safe, easy and controlled extraction of concrete test sample.



**Automatic cleaning**  
High-pressure cleaning system eliminates the need for manual cleaning of the inside of mixer.



**Manual operation**  
Mixing tools can be easily adjusted into optimal position during servicing.



**Camera**  
Optional remote camera surveillance for monitoring mixing process from the control room.



**Moisture control**  
Electrodes measure humidity in the concrete and automatically regulate addition of water via SKAKOMAT 600.



**Safety system**  
Safety system for door openings with key interlock. The safety system meets prevailing quality and higher performance levels than required by/in EU safety standards.



**Discharge gates**  
Detachable hatch with safety system for easy cleaning and maintenance.

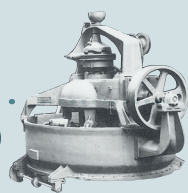
**Shovels**  
Unique two-level shovel technology ensures better controlled high intensive mixing. Bolts are countersunk so concrete will not stick and old concrete will not get mixed in with new batches.



**Hydraulic powerpack**  
Manual discharge function ensures that discharge can take place in case of power failure.

## Evolution of mixers

1929



1963-1979



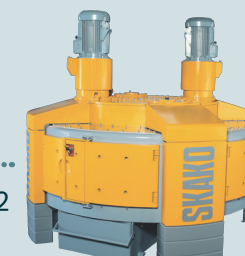
1979-1991



1991-2001



2001-2012



TODAY

